



Moreton Bay College

Breadth of mind. Depth of heart.



Moreton Bay Boys' College

Life adventurers. Life achievers.

The Moreton Bay Colleges

Strategic Plan 2014-2018



PREAMBLE

Moreton Bay College was founded in 1901 by Miss Alice J Alison Greene and her sister Anne, in a school specially designed and built by their father. Its location was in the heart of Wynnum town, on Bay Terrace.

In 1944, the Greene family handed the school over to the Methodist Church who gave the school to the Presbyterian and Methodist Schools' Association (PMSA) to administer. The school was originally called Moreton Bay Girls' High School but in 1957, the name was changed to Moreton Bay College (MBC).

During the 1960s and early 1970s the College faced a number of difficulties and was closed by the PMSA. This decision was rescinded shortly after and the Uniting

Church eventually assumed responsibility for the College. In 1979 Moreton Bay College was reconstituted with an enrolment of 116 girls.

At the end of 1981, the College acquired 20 hectares of hillside land on Wondall Road and the Board began planning the relocation of the College to the new site. Today, MBC is one of Brisbane's leading girls' schools, offering a unique, all-round education for each student, based on its record of strong academic achievement, exceptional cultural and sporting success and a commitment to Christian values and service to others.

In the 1990's families of Moreton Bay College and the wider community who lived in Brisbane's bayside suburbs had sought a local boys-only school that replicated the ethos and culture of MBC, and provided an equivalent educational

experience for their sons. Subsequently, MBC and the PMSA entered into an agreement, making possible the establishment of Moreton Bay Boys' College (MBBC) in 2003.

In 2008, a formal Memorandum of Understanding, committing to a close working relationship between the two Colleges, was established. This was strengthened in July 2011 when the two Colleges were amalgamated. Retaining their separate identities, single sex focus, governance and financial management, the two were constitutionally joined by a common Board membership and the appointment of Ms Jennifer Haynes as Principal of both colleges.

A separate, not-for-profit company, Moreton Bay Boys' College Ltd, owns and operates the boys' college. As the first independent boys' school to be



established within Brisbane in some 65 years, the establishment of MBBC was a defining moment in history.

The College moved to its present position in 2004, and is located on 13 hectares of stunning, natural environment just a few minutes away from Moreton Bay College, offering families convenience plus the confidence of common values, and the educational benefits that single-sex schools can offer.

With International Baccalaureate programs in the primary and middle years,

an academic focus, multiple learning pathways, a broad range of opportunities and firm Christian values, Moreton Bay Boys' College helps boys experience more of life, and the emerging possibilities of a changing world.

The decision to join the Colleges together is, at its heart, quite simple – Moreton Bay Boys' College and Moreton Bay College are stronger together. Both Colleges have significant strengths to offer the other and together have a unique market leading proposition in private school education.

Both Moreton Bay College
and Moreton Bay Boys' College
have significant strengths to
offer the other.

Together we are stronger.



OUR VISION

The Moreton Bay Colleges will be acknowledged as leaders in single sex education, nurtured and guided by our common values and shared philosophy.

Together we are stronger.

OUR MISSION

In pursuit of our vision, we are committed at each college to the ongoing development of enquiring and creative minds in safe and supportive, single sex learning contexts that are guided by Christian principles and beliefs.

OUR VALUES

As Christian colleges in the Uniting Church tradition, we are deeply committed to fostering the personal, moral, spiritual and academic growth of our students and their interest in serving the community. The Moreton Bay Colleges are active in pursuing the following values through word and deed:

Engagement

- We live and learn with passion, enthusiasm and resourcefulness.
- We embrace innovation and creativity to contribute to and shape the future.

Character

- We act with integrity and goodwill in all that we do.
- We show courage and resilience.

Care

- We care for ourselves, others and the environment.
- We nurture the best in each other.

Team work

- We are open-minded and respectful towards each other.
- We work collaboratively to achieve our common purpose.

If everyone is moving forward together, then success takes care of itself.

Henry Ford

OUR PLAN

The Strategic Plan of the Moreton Bay Colleges' is based on the integration of five key pathways.



OUR STUDENT EXPERIENCE

To equip our students for tomorrow's world, we will provide a relevant and engaging curriculum, comprehensive co-curricular programs, nurturing pastoral care and opportunities for Christian worship and service.

- Provide learning experiences that reflect contemporary practices in educational research that enable the creation of a dynamic and innovative 21st Century learning environment.
- Promote resilient and healthy young people whose experience of school is positive and where they develop a sense of belonging by providing outstanding and flexible programs which equip them with relevant personal skills for school and beyond.
- Provide a curriculum that is challenging and responsive to the needs of the students and the expectations of the Colleges' communities.

OUR PEOPLE

To enable our students to reach their full potential we will attract, engage and develop staff who share the values and vision of The Moreton Bay Colleges.

- Maintain our focus on staff as the foremost asset in an outstanding education including providing conditions of employment, teaching facilities, professional learning opportunities and well-being programs that promote the student experience.
- Develop capability and capacity through appropriate Human Resource systems to support staff throughout their career at The Moreton Bay Colleges.

OUR CULTURE

The Moreton Bay Colleges' values radiate through every aspect of College life for all students, staff, parents and the wider community. We see these relationships as valuable partnerships in fulfilling our vision and mission.

- Enhance communication between The Moreton Bay Colleges and their communities.
- Optimise collaboration between the two colleges to enhance the benefits of a shared culture and aligned philosophies to improve the effectiveness of intellectual capital, policies and systems.
- Foster and encourage active and positive relationships with the parent body, alumni and the wider community.

FACILITIES AND RESOURCES

We recognise the importance of the built environs and systems in order to serve as a platform for the learning experiences of the students and the effective functioning of The Moreton Bay Colleges.

- Identify, prioritise and invest in resources that:
 - » Support the learning experiences of our students;
 - » Provide built environs which foster the academic and personal development of the learning community and reflect the Colleges' history, ethos and aspirations;
 - » Further develop an innovative, multifaceted, dynamic and technology-rich learning environment, where our information and communication technologies (ICT) infrastructure is current and integrated effectively.
- Co-ordinate Master Plan development for an appropriately staged building program with adequate resource provisions.

SUSTAINABILITY

To achieve our Colleges' objectives we will be financially secure and have a reputation for excellence and productive relationships with our community.

- Develop a sustainable business model that reflects sound commercial practices.
- Position The Moreton Bay Colleges as leaders in education where we are stronger together but uniquely placed for the provision of education for boys and girls within a single sex setting.
- Establish a philanthropic program to attract and secure substantial capital support for the development of new resources across both colleges.
- Strengthen The Moreton Bay Colleges' commitment to environmental stewardship.

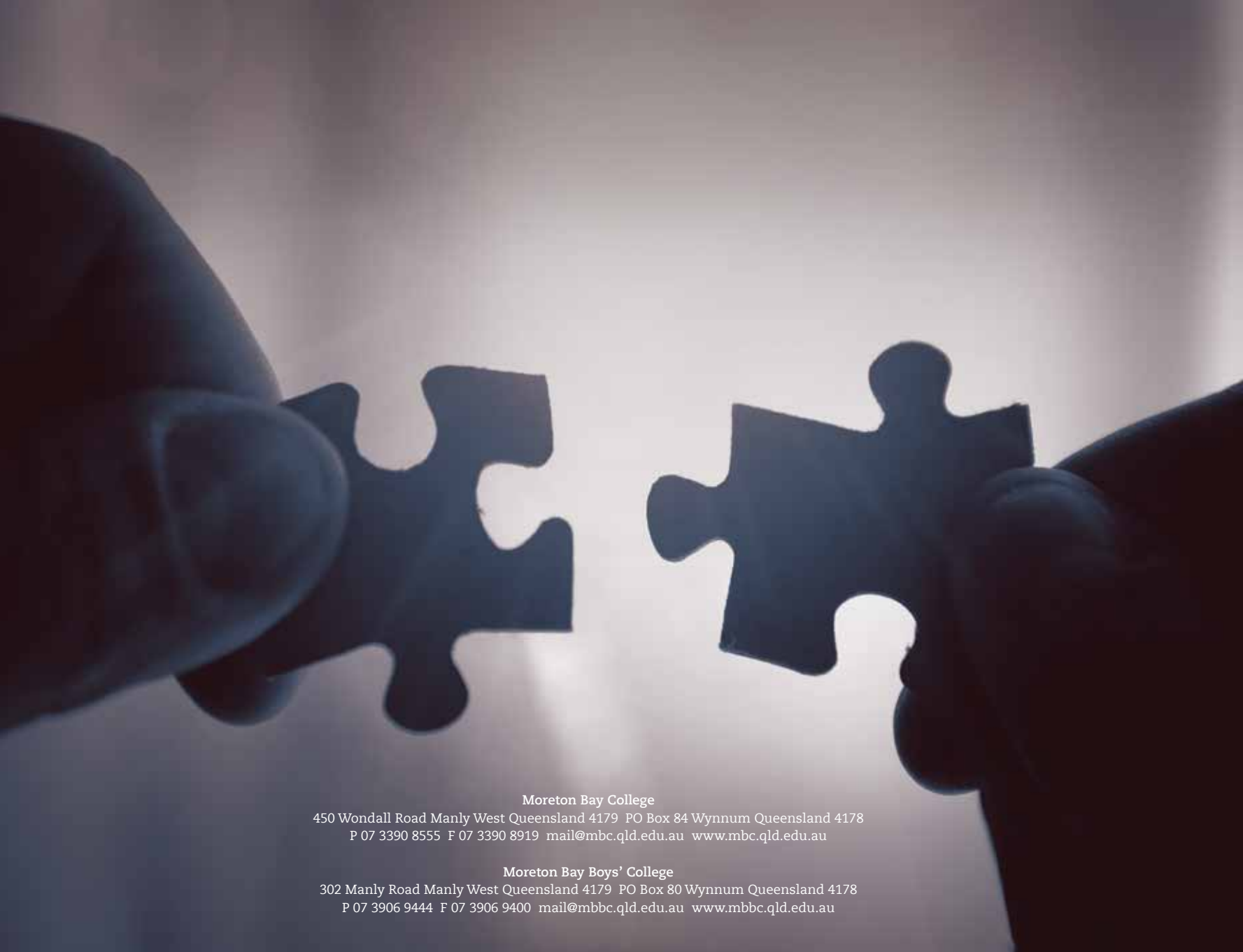
MEASURES OF SUCCESS

- Academic performance and student post-school destinations
- Student social and emotional wellbeing
- Parent, student and staff satisfaction
- Financial performance
- Market share

Leadership and learning are indispensable to each other.

John F. Kennedy





Moreton Bay College

450 Wondall Road Manly West Queensland 4179 PO Box 84 Wynnum Queensland 4178
P 07 3390 8555 F 07 3390 8919 mail@mbc.qld.edu.au www.mbc.qld.edu.au

Moreton Bay Boys' College

302 Manly Road Manly West Queensland 4179 PO Box 80 Wynnum Queensland 4178
P 07 3906 9444 F 07 3906 9400 mail@mbbc.qld.edu.au www.mbbc.qld.edu.au